

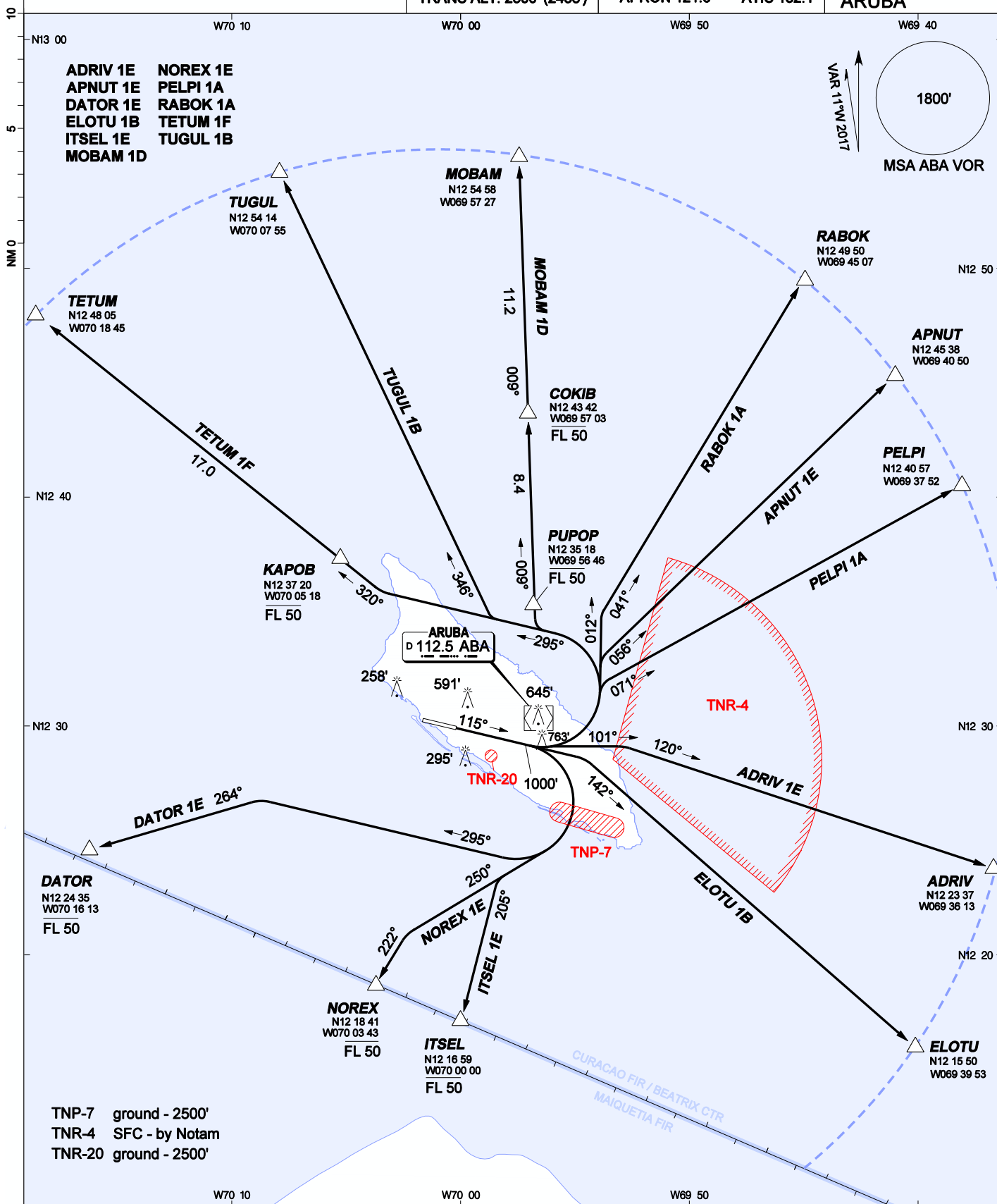
AIP DUTCH CARIBBEAN

VOR DEPARTURES RWY 11 - ICAO

AD ELEVATION: 62'
TRANS LEVEL: FL 40
TRANS ALT: 2500' (2438')

BEATRIX:
APP/TWR 120.9 GND 118.0
APRON 121.6 ATIS 132.1

REINA BEATRIX
INT'L (TNCA)
ARUBA



CHANGES: Mag var date:

1. Climb on runway course 115° to 1000' before turning. Follow assigned route.
2. All departure routes: minimum 235 fpm until 800'.
3. Rwy 11 DER to TNR-4 6.8 nm. Advise ATC if unable to climb above NOTAMed ceiling prior to crossing boundary.
4. Rwy 11 DER to TNP-7 oil refinery 5.0 nm, requiring 490 fpm to reach 2500' at TNP-7 boundary.

COKIB	N12 43 41.53	W069 57 03.09	PUPOP	N12 35 17.65	W069 56 45.52
ELOTU	N12 15 49.93	W069 39 52.84	RABOK	N12 49 49.83	W069 45 07.00
KAPOB	N12 37 19.89	W070 05 18.39	TUGUL	N12 54 13.98	W070 07 55.25
PELPI	N12 40 56.60	W069 37 51.80			